

Macintosh

Driver Install Manual

Recommended system

Mac computer with an intel processor running OS 10.6.4 (Snow Leopard) or later

NOTE

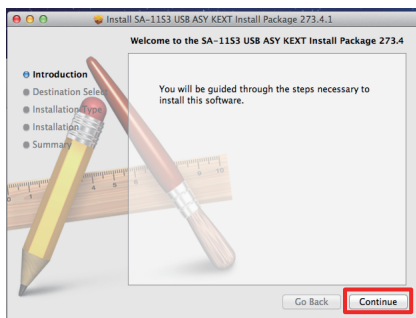
- The dedicated driver must be installed in the computer before SA-11S3 is connected to a computer. Operation will not occur correctly if connected to the computer before the dedicated driver has been installed.
- Operation may fail in some computer hardware and software configurations.

1. Double-click "SA11S3USBASY-***.*.pkg" to start the installation.

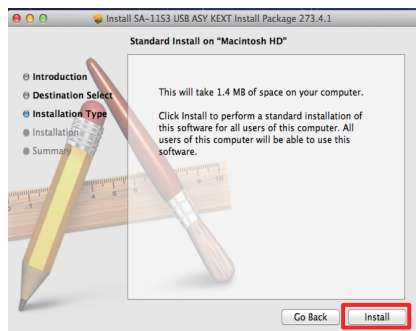
* "***.*." varies depending on the version.

| Earlier | Date Modified |
|--------------------------|------------------|
| MACOSX | 2012/05/25 14:48 |
| SA11S3USBASY-273.4.1.pkg | 2012/04/11 11:23 |

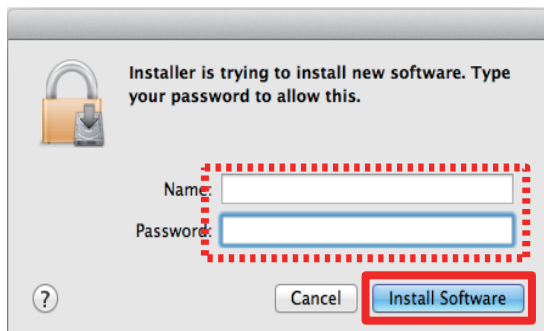
2. Click "Continue".



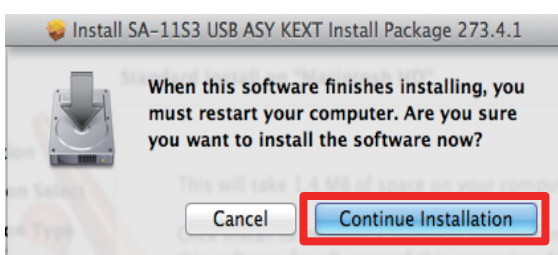
3. Click "Install".



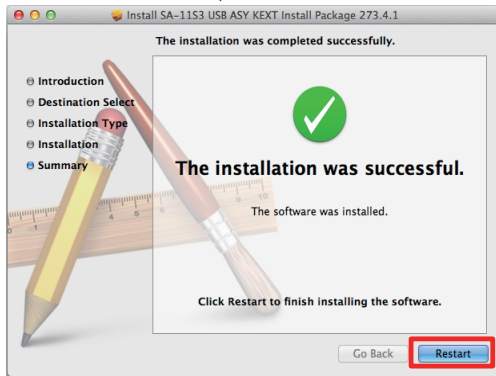
4. When you are prompted for "Name" and "Password", enter the name and password used for the administrator account and click "Install Software".



5. Click "Continue Installation" to start the installation. Do not perform any operation on the computer until the installation is completed.



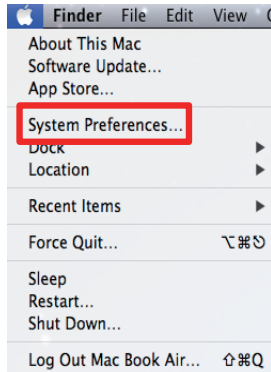
6. When the installation is completed, click "Restart" to restart the computer.



7. Check if the connection is successful, and make settings.

1) Check the connection.

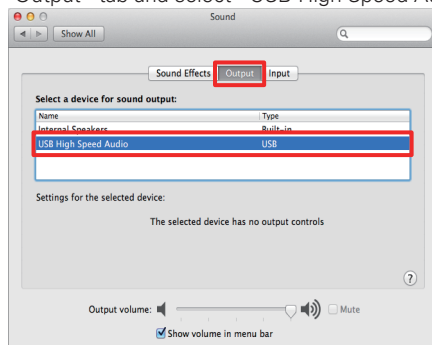
①Click "System Preferences..."



②Click "Sound".



③Click the "Output" tab and select "USB High Speed Audio".

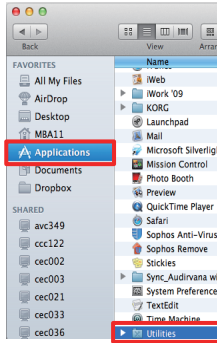


2) Change and optimize the settings.

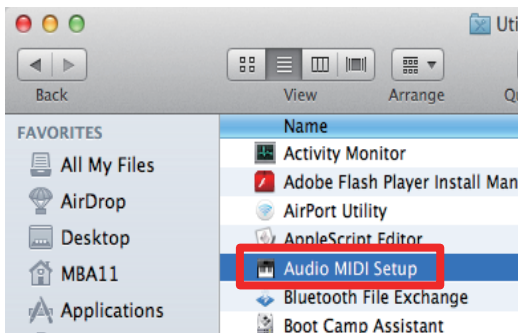
① Double-click "Macintosh HD".



② Click "Applications" and then "Utilities".



③ Click "Audio MIDI Setup".



④ Click "USB High Speed Audio" and change the "Format" part that is displayed on the right by selecting the desired sample rate and bit depth.

* Audio is output after being re-sampled according to the sample rate and bit depth set here.

